

Read this manual thoroughly before assembly, to ensure proper assembly of this instrument. This manual should be saved and kept in a place for quick reference.

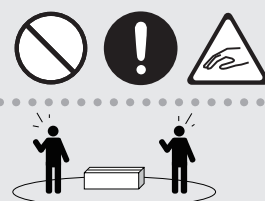
Be sure to read these instructions before assembling.

Precautions when handling

- Make sure that another person is on hand to help with the assembly and setup.
- Lift the piano carefully while keeping it level.
- Prepare an area in which you can perform the assembly safely.
- If necessary, spread out a blanket or similar material to prevent the stand or floor from being scratched during assembly.
- To prevent the stand and piano from getting soiled during assembly, use gloves as necessary. When doing so, be sure that any dirt, oil, etc. on your gloves does not get on this unit (especially in the case of light-colored instruments).
- Do not place the piano unit directly on the floor. Doing so could damage the connectors and holders on the bottom of the piano.
- Place the unit at a location that is level and sure to remain stable. The instrument must never be placed on top of deep-pile carpet. Failure to observe this may damage the pedals due to instability and unnecessary movement.
- Be very careful, when you assemble and move the piano, to make sure that you do not drop it on your hands or feet.
- Make sure to keep screws and any other small parts in a safe location that is out of the reach of small children, where there is no risk of the part being accidentally swallowed.

Caution when assembling the unit

- Do not use a power tool (e.g., an electric screwdriver) to assemble the stand. You risk damaging or stripping the screws.
- Tighten the screws by hand first, and then use a screwdriver to tighten further. When using a screwdriver to temporarily tighten the screws after tightening by hand, tighten the screws halfway in.
- To assemble this instrument successfully, compensate for any misalignment (such as tilting, protruding or warping of parts) while you tighten the screws.
- Be careful that the pedal cord doesn't get pinched underneath the stand during assembly. This may cause a short.



Video manual

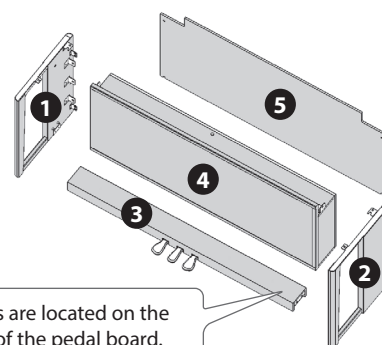
See the "Quick Start Video" for the points you need to be aware of and so on when you assemble the piano.

Please watch this video before assembly.



https://roland.cm/ksl-9_qs

Checking the parts



The screws are located on the back side of the pedal board.

1	Side board (left)	A	Screws (M6 x 40 mm) x 4
2	Side board (right)	B	Screws (M5 x 25 mm) x 14
3	Pedal board	C	Screws (M4 x 16 mm) x 2
4	Speaker box	D	Headphone hook x 1
5	Rear board	E	Thumbscrews x 4

* The screwdriver required for assembly is not included. Obtain a Phillips screwdriver of the appropriate size for each screw (sizes: #2, #3).

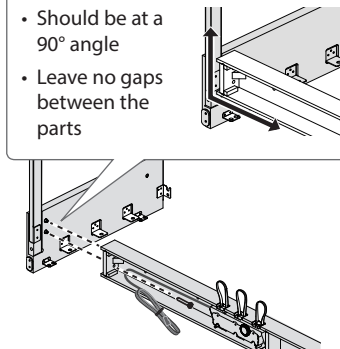
Assembling the stand

- Place the left side board ① against the pedal board ③ so that the metal bracket is on the inside. Tighten screws ① (2) three times by hand, and use a screwdriver to temporarily fasten them.

* If you tighten the screws too much here, this may damage the speaker box to be inserted in step 4.

Side boards and pedal board

- Should be at a 90° angle
- Leave no gaps between the parts



First, make sure to tighten the screws three times by hand.

If you don't initially tighten them by hand, the screw threads may be stripped, making assembly impossible.

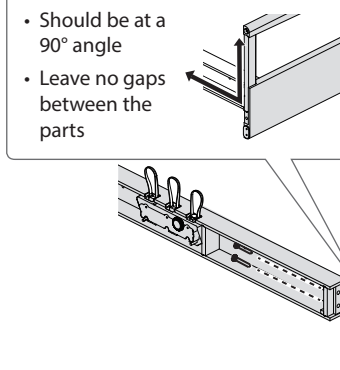


- Place the right side board ② against the pedal board ③ so that the metal bracket is on the inside. Tighten screws ① (2) three times by hand, and use a screwdriver to temporarily fasten them.

* If you tighten the screws too much here, this may damage the speaker box to be inserted in step 4.

Side boards and pedal board

- Should be at a 90° angle
- Leave no gaps between the parts

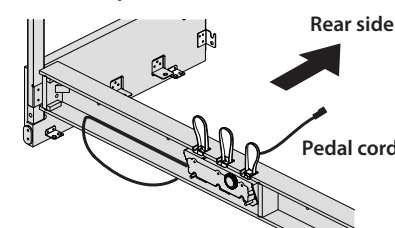


First, make sure to tighten the screws three times by hand.

If you don't initially tighten them by hand, the screw threads may be stripped, making assembly impossible.



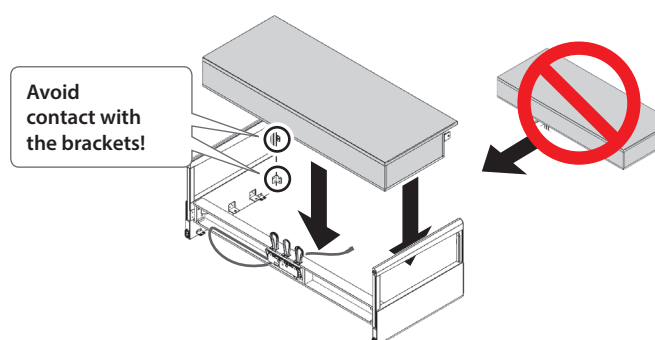
- Unravel the pedal cord that's bundled up, and run the pedal cord under the pedal board to the rear side of the stand.



- Place the speaker box from the direction shown by the arrows.

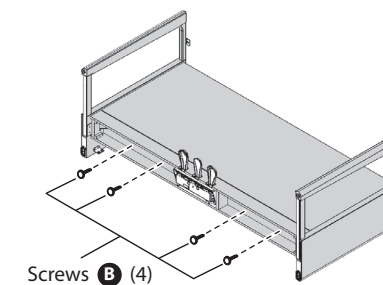
* Take care that the speaker box does not strike the metal brackets of the side boards.

* If you insert the speaker box from the side, the speaker box might get scratched by the side board brackets. Make sure to insert the speaker box from the specified direction.



Avoid contact with the brackets!

- Insert screws ② (4) into the screw holes, and tighten three times by hand.



First, make sure to tighten the screws three times by hand.

If you don't initially tighten them by hand, the screw threads may be stripped, making assembly impossible.

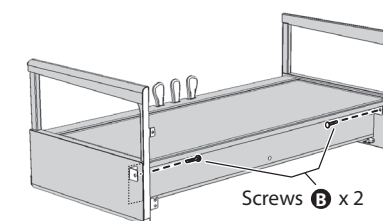


- Use a screwdriver to firmly tighten screws ① (4) that you temporarily tightened in steps 1 and 2.

* Assemble the parts so that there is no gap between the side boards and the pedal board.

- Use a screwdriver to firmly tighten screws ② (4) that you temporarily tightened in step 5.

- Insert screws ③ (2) into the speaker box brackets, and firmly tighten them with a screwdriver after tightening them three times by hand.



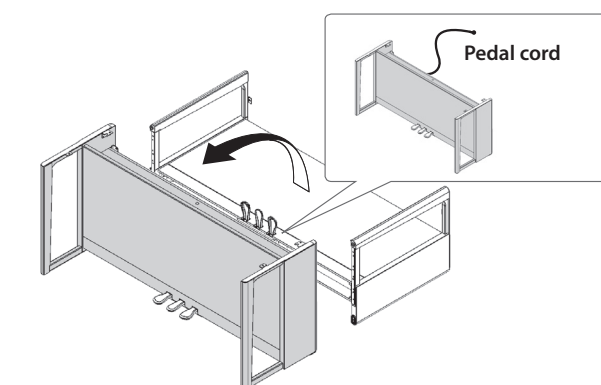
First, make sure to tighten the screws three times by hand.

If you don't initially tighten them by hand, the screw threads may be stripped, making assembly impossible.

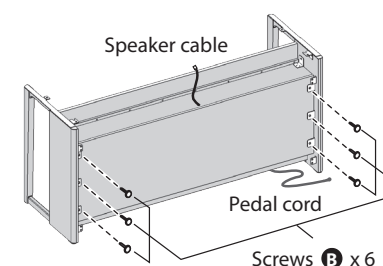


- With the help of another person, and each person grasping the left and right side board respectively, raise the stand to the upright position.

* Make sure that the pedal cord is coming out of the rear side of the stand, and raise the stand to upright position.



- Insert screws ④ (6) into the screw holes on the speaker box brackets, and firmly tighten them with a screwdriver after tightening them three times by hand.



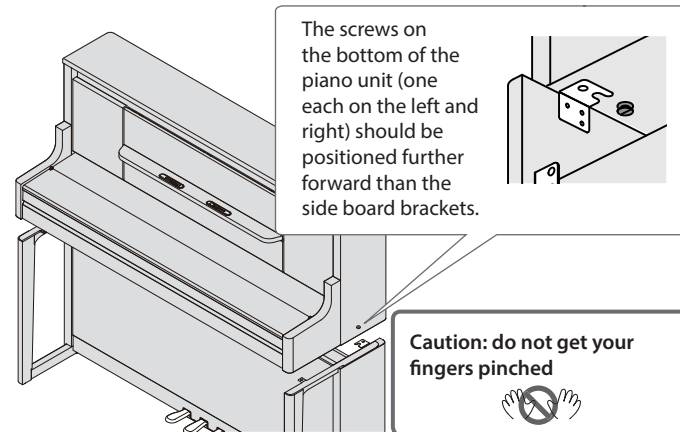
First, make sure to tighten the screws three times by hand.

If you don't initially tighten them by hand, the screw threads may be stripped, making assembly impossible.

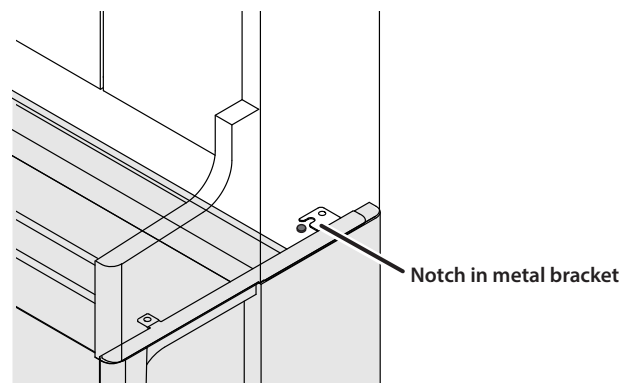


Placing the piano on the stand

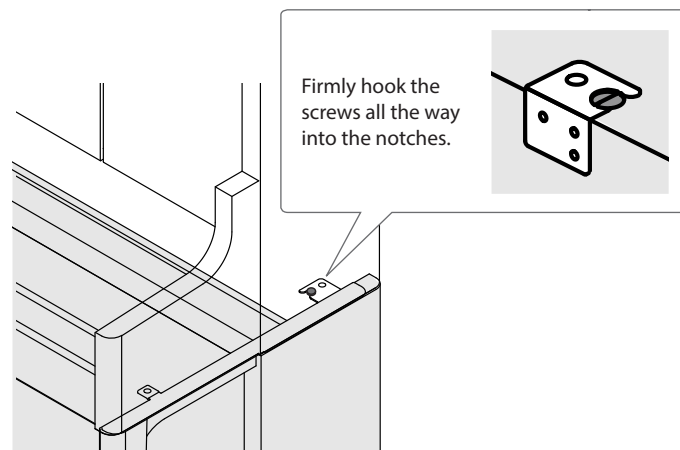
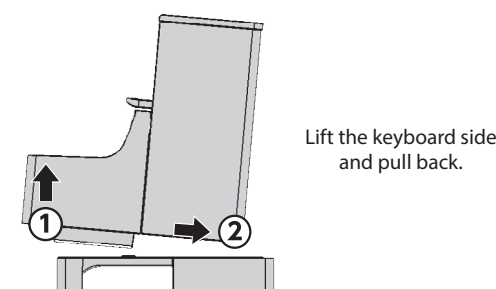
1. Lift up the piano unit (this should be done by two people), and place it on top of the side boards.



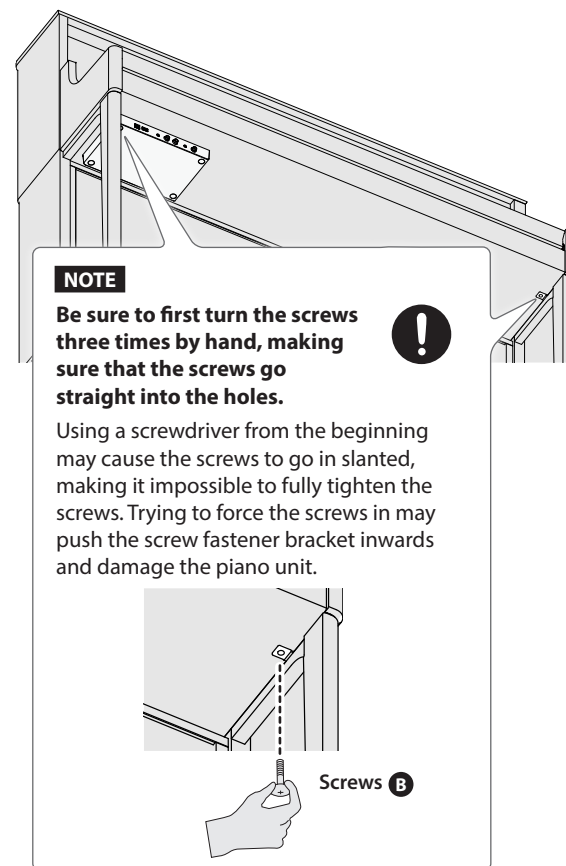
2. Line up the screws on the bottom of the piano unit with the notches in the metal brackets on the side boards.



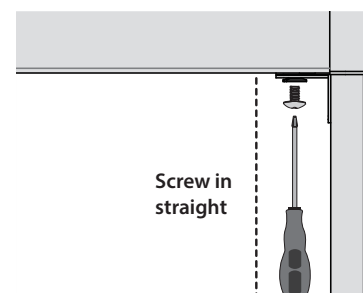
3. While lifting the keyboard side of the piano unit up 1–2 cm, pull it to the rear to hook it onto the metal brackets.



4. Use your hand to tighten screws **B** (2) three times on the bottom of the piano unit.

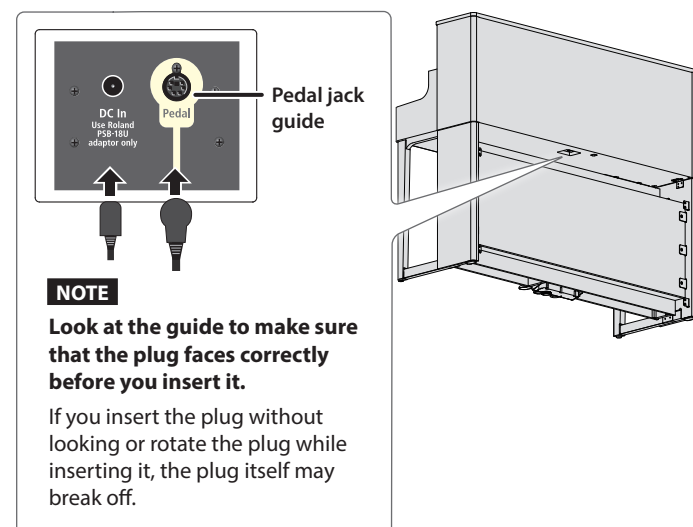


5. Use a screwdriver to firmly tighten screws **B** (2) that you tightened in step 4.



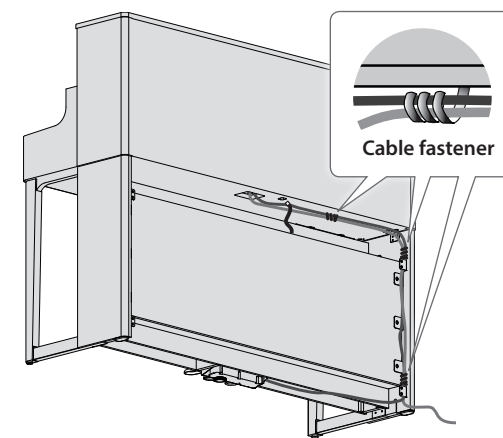
6. From the rear side of the piano, connect the AC adaptor to the DC In jack on the bottom of the piano, and connect the pedal cord to the Pedal jack.

* The guide shown on the Pedal jack indicates the plug shape and which direction you should insert the plug. Connect the Pedal jack in the same direction as shown on the guide.

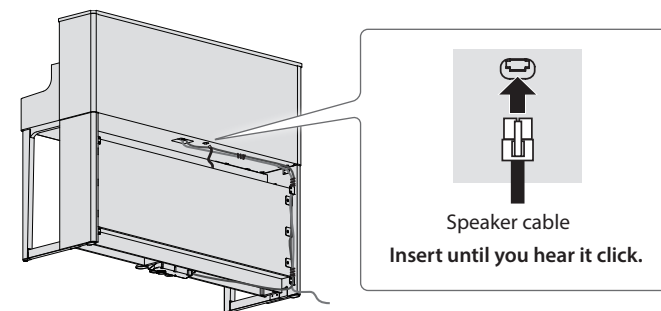


7. Use the cable fasteners (3) located on the rear side of the piano to fasten the AC adaptor cable and the pedal cord.

* Fasten the cables with the fasteners so that they don't touch the ground. If the cables are sagging, they might accidentally get stepped on under the stand, causing a short.

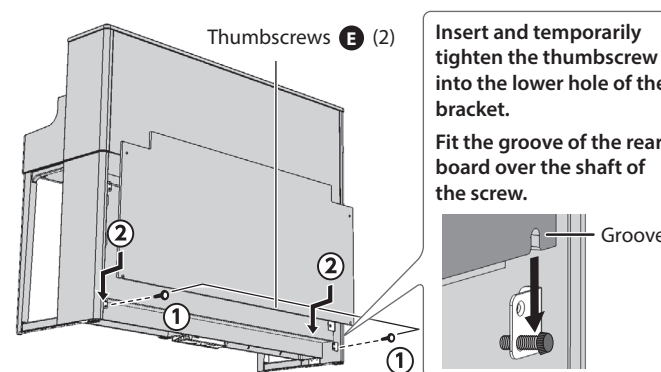


8. Connect the speaker cable that's coming out of the rear side of the speaker box.

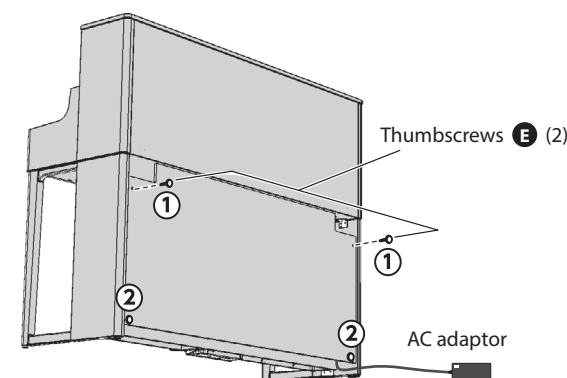


9. Temporarily insert thumbscrews **E** (2) into the holes on the bottom side and tighten, leaving a gap (at least 12 mm) to insert the rear board. Next, insert the rear board.

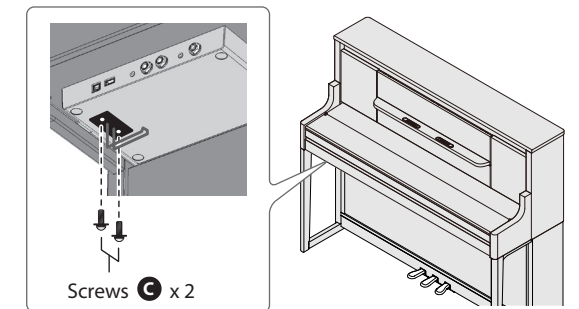
* You can't insert the rear board if the thumbscrews are too tight.



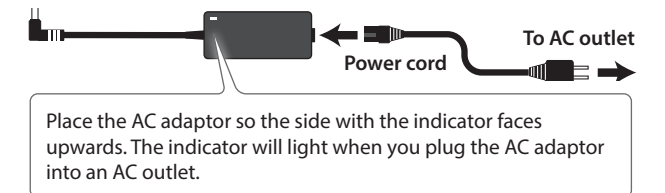
10. Tighten the upper part of the rear board with thumbscrews **E** (2) to fasten, and then firmly tighten the thumbscrews (2) at the lower part of the rear board that you temporarily tightened in step 9.



11. Use screws **C** (2) to fasten the headphone hook **D**.



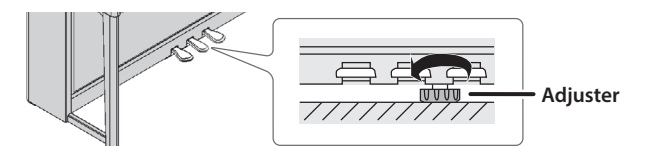
12. Connect the supplied AC adaptor and power cord.



13. Adjust the adjuster located under the pedals.

Rotate the adjuster to lower it until it contacts the floor. If you are using the piano on carpet, lower the adjuster so that it presses strongly against the floor.

* If there is a gap between the adjuster and the floor, the pedal board might be damaged or you may hear some unusual noises when you press the pedals.



Moving the piano after setting it up

* With the help of at least one other person, lift the unit horizontally and carry it with care to avoid pinching your hands or dropping the unit on your feet.

* When carrying the piano and stand as separate units, follow the steps below, and also remove the headphone hook. If you don't remove the headphone hook, it might scratch the floor, or the headphone hook or piano unit itself might get damaged.

1. Close the keyboard cover.
2. Close the top lid.
3. Pull the music rest to store it.
4. Unplug the AC adaptor from the AC outlet.
5. Rotate the adjuster located under the pedals to raise it.
6. When you have decided on the new location for the unit, rotate the adjuster so that it contacts the floor.